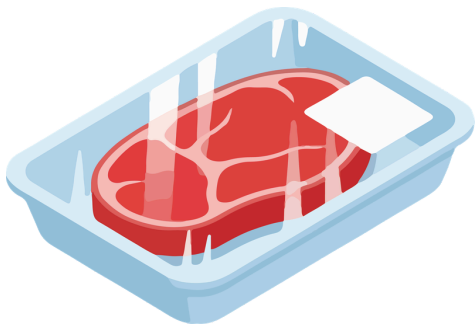


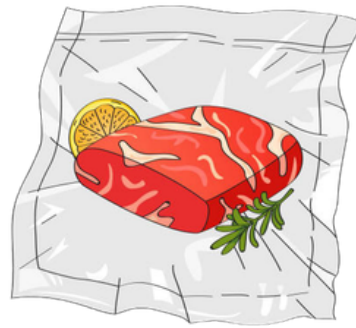


BEEF PACKAGING

Meat Science



Overwrap



Vacuum



Chub

Beef is packaged in three main forms: overwrap, vacuum and chub. Overwrap is the most common. It is a film of semi-permeable plastic over a foam tray. It allows for the most contact with oxygen. Vacuum packaging is a package where the oxygen has completely been removed from the package to ensure a longer shelf life for the product. Lastly, chubs are the most common for ground products. The film used for chubs is strong and hardly ever breaks, making it a good choice for ground products.